













PRODUCT CATALOG

Federal Brace



BEAUTIFULLY CRAFTED
CONFIDENT SUPPORT

CONTENTS

	Designer Countertop Brackets	4
	Bathroom Supports	16
	LED Lighting	22
	Furniture Supports	24
	Decorative Shelf Systems	32
	Wood Corbels	42
	Handles And Pulls	48
	Closet Brackets	50
	Mantel Brackets	52
	Cabinet Supports	54
	Stainless Steel Surfaces	56
	Counter Mount Cell Phone Charger	62



FULL SUPPORT GUARANTEE

True décor starts with care. To have a truly decorative element, you have to care about the craftsmanship and quality of your product. Federal Brace exemplifies care. Throughout our entire manufacturing process, our brackets are treated with attention to detail which produces a product with an uncompromised craftsmanship and unmatched quality.

DESIGNER COUNTERTOP SUPPORTS

Federal Brace thrives on helping people find support solutions for their home or commercial settings. This can take on many forms, from decorative countertop supports, to completely hidden or lighted supports. Federal Brace became the leader in the industry for countertop supports by continually listening to you - designers, architects, builders, etc. This category of supports grew from those requests and the creativity of our development team.





Hidden Countertop Supports



Low Profile Countertop Support Brackets



Elevated Countertop Supports



Countertop Stand Offs



Island Legs

DESIGNER COUNTERTOP SUPPORTS HIDDEN SUPPORTS



Anthem (Corner)

- Sizes: 12x6.44x2, 14x6.44x2 and 17x6.44x2
 - Finishes: Flat Black
 - Carry Capacity: 375 Pounds Each
- Starting at \$55.05



Federal Brace hidden countertop bracket designs provide for use in multiple applications when you want to achieve the floating counter look.



Lincoln

- Sizes: 10x12x0.25, 12x12x0.25 and 14x12x0.25
- Finishes: Black and Stainless
- Carry Capacity: 375 Pounds Each

Starting at \$54.50



Freedom

- Sizes: 8x2x8, 10x2x10, 12x2x12, 14x2x14, 16x2x16, 18x2x18 and 20x2x20
- Finishes: Black, White, and Raw Steel
- Carry Capacity: 375 Pounds Each

Starting at \$54.59



Harmony

- Sizes: 24x1.50x2
- Finishes: Black
- Carry Capacity: 375 Pounds Each

Starting at \$48.70



Carrier

- Sizes: 8x3x2, 10x3x2, 12x3x2, 16x3x2 and 20x3x2
- Finishes: Stainless and Raw Steel
- Carry Capacity: 500 Pounds Each

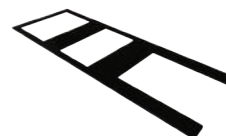
Starting at \$98.69



Liberty

- Sizes: 8x3x0.25, 10x3x0.25, 12x3x0.25, 14x3x0.38, 16x3x0.38, 18x3x0.38 and 20x3x0.50
- Finishes: Raw Steel
- Carry Capacity: 375 Pounds Each

Starting at \$51.44



Provincial

- Sizes: 36x12x0.25
- Finishes: Black
- Carry Capacity: 375 Pounds Each

Starting at \$123.25



Franklin

- Sizes: 10x0.25x10, 12x0.25x12 and 14x0.25x14
- Finishes: Raw Steel
- Carry Capacity: 375 Pounds Each

Starting at \$46.25



Independence (Corner)

- Sizes: 8x8x2, 12x12x2 and 18x18x2
- Finishes: Black
- Carry Capacity: 375 Pounds Each

Starting at \$60.71



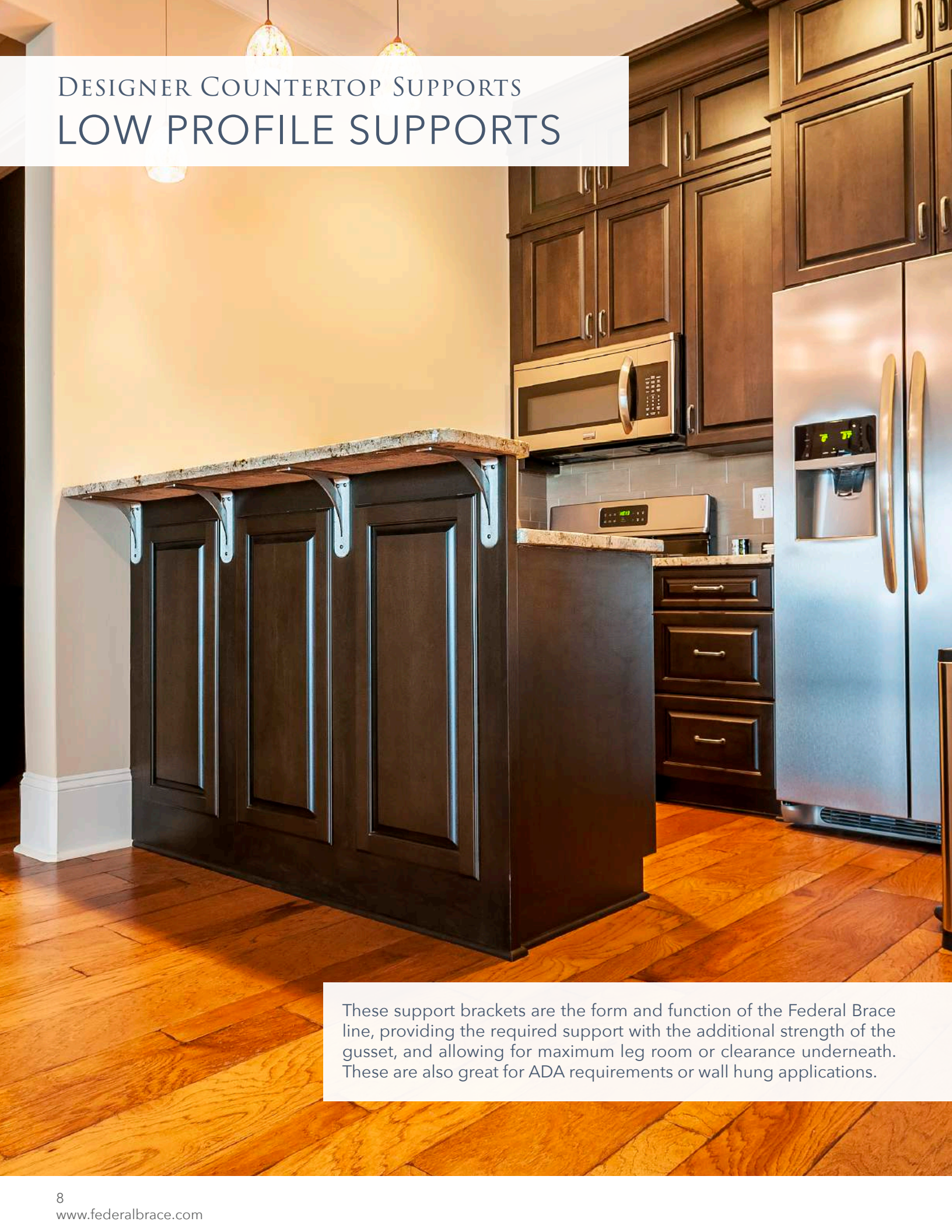
Harrison

- Sizes: 23.25x12x0.25, 27.25x12x0.25 and 31.25x12x0.37
- Finishes: Black
- Carry Capacity: 375 Pounds Each

Starting at \$87.57

DESIGNER COUNTERTOP SUPPORTS

LOW PROFILE SUPPORTS



These support brackets are the form and function of the Federal Brace line, providing the required support with the additional strength of the gusset, and allowing for maximum leg room or clearance underneath. These are also great for ADA requirements or wall hung applications.



Arrowwood

- Sizes: 8x2x8, 10x2x10, 12x2x12, 14x2x14, 16x2x16, 18x2x18, 20x2x20 and 24x2x24
- Finishes: Bronze, Flat White, Stainless, and Raw Steel
- Carry Capacity: 500 Pounds Each Starting at \$84.01



Streamline

- Sizes: 8x2x8, 10x2x10, 12x2x12, 14x2x14, 16x2x16, 18x2x18, 20x2x20 and 24x2x24
- Finishes: Stainless and Raw Steel
- Carry Capacity: 500 Pounds Each Starting at \$83.70



Torii

- Sizes: 8x2x8, 10x2x10 and 12x2x12
- Finishes: Stainless and Raw Steel
- Carry Capacity: 500 Pounds Each Starting at \$93.70



Brunswick

- Sizes: 8x2x8, 10x2x10, 12x2x12, 14x2x14, 16x2x16, 18x2x18, 20x2x20 and 24x2x24
- Finishes: Bronze, Stainless and Raw Steel
- Carry Capacity: 500 Pounds Each Starting at \$84.01



Providence

- Sizes: 8x2x4 and 12x2x6
- Finishes: Stainless and Copper (Black "L" Bracket)
- Carry Capacity: 375 Pounds Each Starting at \$143.62



Chevron

- Sizes: 10x2x10, 16x2x16 and 18x2x18
- Finishes: Stainless and Raw Steel
- Carry Capacity: 500 Pounds Each Starting at \$91.73



Ashbury (Corner)

- Sizes: 18x3x18, 21x3x21 and 24x3x24
- Finishes: Stainless and Raw Steel
- Carry Capacity: 500 Pounds Each Starting at \$103.73



Portland

- Sizes: 10x2x10, 12x2x12 and 16x2x16
- Finishes: Stainless and Raw Steel
- Carry Capacity: 500 Pounds Each Starting at \$92.50



DESIGNER COUNTERTOP SUPPORTS ELEVATED SUPPORTS

Elevated supports can be mounted to existing surfaces to create a striking elevated or secondary surface. Federal Brace elevated supports will present a graceful cantilevered secondary counter to become the cornerstone of your kitchen.

"I really love the products Federal Brace offers, and I will be incorporating many more of them into future designs. Ordering online or over the phone is very easy, and your customer service and quick shipping have been excellent! I would definitely recommend Federal Brace to everyone!"

Neil M.



Alpine

- Sizes: 12x2x20
- Finishes: Stainless and Raw Steel
- Carry Capacity: 500 Pounds Each

Starting at \$177.43



San Juan

- Sizes: 11x3x11
- Finishes: Black, Bronze and Stainless
- Carry Capacity: 500 Pounds Each

Starting at \$139.14



Valencia

- Sizes: 10x2x20
- Finishes: Stainless
- Carry Capacity: 500 Pounds Each

Starting at \$307.95



Phot: Tigh Interiors, LLC Scottsdale, Az





DESIGNER COUNTERTOP SUPPORTS Countertop Stand Offs

These exquisite supports require a professional to drill holes in your sub-counter, allowing you to create a secondary shelf, breakfast bar, or eat in counter. In office settings, countertop stand off supports can create an elegant reception counter to service your customers.



Foremont

- Sizes: 10x2x6
 - Finishes: Black, Bronze, Brushed Stainless and Polished Stainless
 - Carry Capacity: 500 Pounds Each
- Starting at \$116.73



Stonehaven

- Sizes: 7x2.50x5
 - Finishes: Brushed Stainless and Polished Stainless
 - Carry Capacity: 300 Pounds Each
- Starting at \$146.67



Dilworth

- Sizes: 4x2x5
 - Finishes: Black, Bronze, Brushed Stainless and Polished Stainless
 - Carry Capacity: 500 Pounds Each
- Starting at \$92.80



Blakeney

- Sizes: 4x2x5
 - Finishes: Black, Bronze and Steel Mist
 - Carry Capacity: 300 Pounds Each
- Starting at \$110.60



Enterprise

- Sizes: 10x2x6
 - Finishes: Black, Bronze and Stainless Steel
 - Carry Capacity: 500 Pounds Each
- Starting at \$112.31



Noda

- Sizes: 4x2x5
 - Finishes: Black, Bronze and Steel Mist
 - Carry Capacity: 300 Pounds Each
- Starting at \$110.60



Perrine

- Sizes: 10x2x6
 - Finishes: Black, Bronze and Stainless Steel
 - Carry Capacity: 500 Pounds Each
- Starting at \$107.69



The Plaza

- Sizes: 4x2x5
 - Finishes: Black, Bronze and Stainless Steel
 - Carry Capacity: 500 Pounds Each
- Starting at \$92.80

DESIGNER COUNTERTOP SUPPORTS

Island Legs



Island support legs can provide strength and beauty to any area requiring support. Federal Brace island legs provide that support in 1/4" stainless steel or powder coated gloss black, perfect for outdoor bar tops or kitchen work surfaces.

"The brackets came much earlier than anticipated which was GREAT and they are already installed and look amazing!"

Erin M.



Trajan

- Sizes: 4x4x34.50
 - Finishes: Black and Stainless
 - Carry Capacity: 200 Pounds Each
- Starting at \$317.43



Anteris

- Sizes: 5x2.50x34.50
 - Finishes: Black and Stainless
 - Carry Capacity: 200 Pounds Each
- Starting at \$401.89



BATHROOM SUPPORTS



Federal Brace bathroom supports are available for vanities, benches and shelving. Stainless steel or powder coated gloss black, provide them with protection for a wet environment. Federal Brace bathroom supports comply with the Americans with Disabilities Act when installed per the requirements of the Accessibility Guidelines, Section 606 Sinks, of the Act.



Floating Vanity Supports



Shower Bench Brackets

BATHROOM SUPPORTS

Floating Vanity Supports

Federal Brace floating vanity supports are available in finishes for the humid areas of baths. Our designs are hidden behind drywall or by the vanity and will support both the cabinet and the vanity top. Federal Brace bathroom supports will comply with the Americans with Disabilities Act when installed per the requirements of the Accessibility Guidelines, Section 606 Sinks, of the Act.



ADA Compliant

Accessibility Guidelines, Section 606 Sinks, of the Act.



Hammam

- Sizes: 20x3x48
 - Finishes: Black and Stainless
 - Carry Capacity: 200 Pounds Each
- Starting at \$108.40



Maidan

- Sizes: 18x22x7
 - Finishes: Black and Stainless
 - Carry Capacity: 200 Pounds Each
- Starting at \$199.89



Sento

- Sizes: 18x2x10
 - Finishes: Black and Stainless
 - Carry Capacity: 200 Pounds Each
- Starting at \$170.50



Bearsden

- Sizes: 20x3x48
 - Finishes: Black
 - Carry Capacity: 200 Pounds Each
- Starting at \$168.92



Titus

(left & right brackets sold separately)

- Sizes: 18x2x10
 - Finishes: Galvanized
 - Carry Capacity: 100 Pounds Each
- Starting at \$29.98



BATHROOM SUPPORTS

Shower Bench Supports



Federal Brace shower bench supports are made of a sturdy 1/4" thick material and have carrying capacities of 300 to 500 pounds each. Stainless steel is perfect for any wet environment. Whether a corner shower bench or rectangular bench is required, we have something for you.



Cascata

- Sizes: 16x0.50x16
 - Finishes: Stainless
 - Carry Capacity: 300 Pounds Each
- Starting at \$190.48



Marianna

- Sizes: 18x0.19x18
 - Finishes: Stainless
 - Carry Capacity: 500 Pounds Each
- Starting at \$305.92



Sutherland

- Sizes: 10x3x5, 14x3x7 and 16x3x8
 - Finishes: Stainless
 - Carry Capacity: 375 or 500 Pounds
- Starting at \$122.88

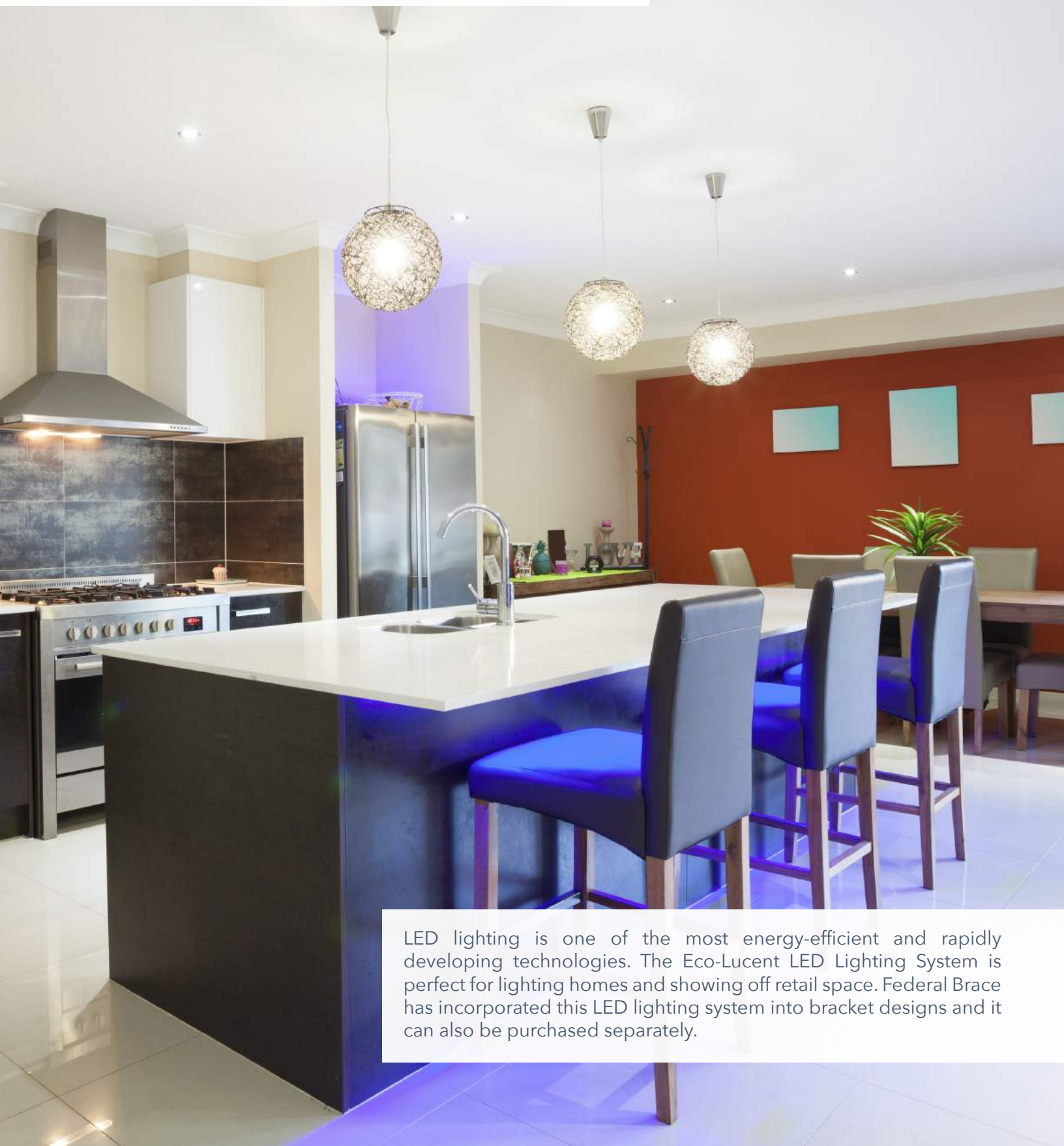


Foss

- Sizes: 14x2x18
 - Finishes: Stainless
 - Carry Capacity: 500 Pounds Each
- Starting at \$317.90



LED LIGHTING



LED lighting is one of the most energy-efficient and rapidly developing technologies. The Eco-Lucent LED Lighting System is perfect for lighting homes and showing off retail space. Federal Brace has incorporated this LED lighting system into bracket designs and it can also be purchased separately.

ECO-LUCENT



Eco-Lucent LED Lighting System

- Sizes: 5", 9" and 21"
- Finishes: Aluminum
- Screws: 3M VHB Tape

Starting at \$39.99



Floating Shelf System + LED

- Sizes: 24x10x3
- Finishes: Stainless and White Wood Grain Veneer
- Carry Capacity: 100 Pounds Each

Starting at \$198.75



Lumiere

- Sizes: 8x4
 - Finishes: Stainless Sleeve/Black Support Bracket
 - Carry Capacity: 375 Pounds Each
- Starting at \$155.15



Luminati

- Sizes: 10x10
 - Finishes: Stainless, Clear Glass
 - Carry Capacity: 500 Pounds Each
- Starting at \$204.96



FURNITURE SUPPORTS



Bench supports, table and desk legs, and furniture feet for all types of seating or furniture crafting are in this category. Multiple finishes and styles are available.



Bench Supports



Table Legs - Desk Legs

Furniture Feet



FURNITURE SUPPORTS

Bench Supports



While different from our shower benches, these supports are the same in the strength and finish of the material to offer protection from the elements, whether indoor or out. These supports come with holes in the top flange for mounting to wood for banquette or outdoor seating.



Georgian

- Sizes: 10x3x5 and 14x3x7
 - Finishes: Stainless
 - Carry Capacity: 500 Pounds Each
- Starting at \$125.82



Brewster

- Sizes: 12x2x12 and 16x2x16
 - Finishes: Raw Steel and Stainless
 - Carry Capacity: 500 Pounds Each
- Starting at \$99.73



Loray

- Sizes: 3x20.50x17.50
 - Finishes: Flat Black
 - Carry Capacity: 500 Pounds Each
- Starting at \$362.40



Torrence

- Sizes: 21.50x3x15.50
 - Finishes: Flat Black
 - Carry Capacity: 500 Pounds Each
- Starting at \$126.88



Banq

- Sizes: 16x3x8
 - Finishes: Raw Steel
 - Carry Capacity: 500 Pounds Each
- Starting at \$127.65



FURNITURE SUPPORTS

Table Legs - Desk Legs



Federal Brace can help you create your own, one-of-a-kind furniture piece. Various table leg designs are available, from sleek and elegant to large and industrial, all with exceptional carrying strength.



Trajan

- Sizes: 4x4x29
 - Finishes: Black and Stainless
 - Carry Capacity: 200 Pounds Each
- Starting at \$309.93/Ea.



Alpha

- Sizes: 2x30x29.50
 - Finishes: Clear Coat
 - Carry Capacity: 500 Pounds Each
- Starting at ... \$1,287.30/Set of 2



Apex

- Sizes: 5x24x28
 - Finishes: Matte Clear Coat
 - Carry Capacity: 500 Pounds Each
- Starting at \$462.50/Set of 2



Anteris

- Sizes: 5x2.50x29
 - Finishes: Black and Stainless
 - Carry Capacity: 200 Pounds Each
- Starting at \$327.97/Ea.



Atherton

- Sizes: 6x6x29
 - Finishes: Clear Coat
 - Carry Capacity: 500 Pounds Each
- Starting at \$871.50/Set of 4



Chronicle

- Sizes: 2x30.25x29.50
 - Finishes: Clear Coat
 - Carry Capacity: 500 Pounds Each
- Starting at ... \$1,329.00/Set of 2



Euro Hairpin

- Sizes: 5x6x29.50
 - Finishes: Clear Coat
 - Carry Capacity: 100 Pounds Each
- Starting at \$85.70/Ea.



Euro Hairpin

(Coffee Table)

- Sizes: 6x5x18
 - Finishes: Clear Coat
 - Carry Capacity: 100 Pounds Each
- Starting at \$59.60/Ea.

FURNITURE SUPPORTS

Furniture Feet



Classic, high-quality characteristics will be added to your furniture when you use Federal Brace furniture feet. Furniture feet are perfect for cabinet bases or for replacing feet on other furniture pieces.



Corinthian

- Sizes: 2x2x5
 - Finishes: Stainless
 - Carry Capacity: 300 Pounds Each
- Starting at \$64.29



Wiltshire

- Sizes: 2x2x5
 - Finishes: Stainless
 - Carry Capacity: 300 Pounds Each
- Starting at \$64.29



Charlotte

- Sizes: 4.25x4.25x5
 - Finishes: Black
 - Carry Capacity: 300 Pounds Each
- Starting at \$102.02

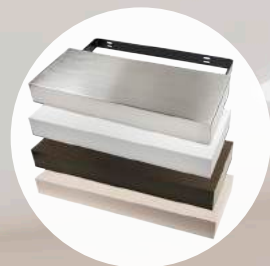


DECORATIVE SHELF SYSTEMS



Photo: KBIS 2017 - Ultimate Kitchen & Bath

Federal Brace shelf systems can be used as bookshelves in offices, accent shelves in living areas, or open shelving units in kitchens and pantries. The applications are endless with Floating Shelf Systems and various other support pieces.



Floating Shelf Systems



Floating Shelf Support Brackets



Universal Shelf System



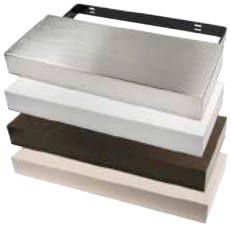
Back Painted Glass

DECORATIVE SHELF SYSTEMS

Floating Shelf Systems



Floating Shelf Systems include the mounting brackets which easily install in any room or office creating the ultimate floating shelf appearance. Each shelf system holds an astounding 100 pounds, allowing you to safely display dishes, books, or media equipment. Multiple floating shelf lengths and finishes are available.



Floating Shelf Systems

- Sizes: 24x10x3, 40x10x3 and 72x10x3
 - Finishes: Stainless, White Wood Grain Veneer, Brown Wood Grain Veneer and Raw Maple
 - Carry Capacity: 100 Pounds Each
- Starting at \$115.65

*LED Floating Shelf in LED Lighting Category pg. 23



DECORATIVE SHELF SYSTEMS

Floating Shelf Support Brackets



Redesign your walls and showcase your favorite items with Federal Brace floating shelf support brackets. Three styles are available, a "U" bracket, a floating shelf rod, and a single arm unit. Use with a box style shelf for a completely floating look.



Floating Shelf Bracket

- Sizes: 8x22.50x1.65, 8x16.75x1.65 and 8x9.75x1.65
 - Finishes: Black
 - Carry Capacity: 100 Pounds Each
- Starting at \$31.88



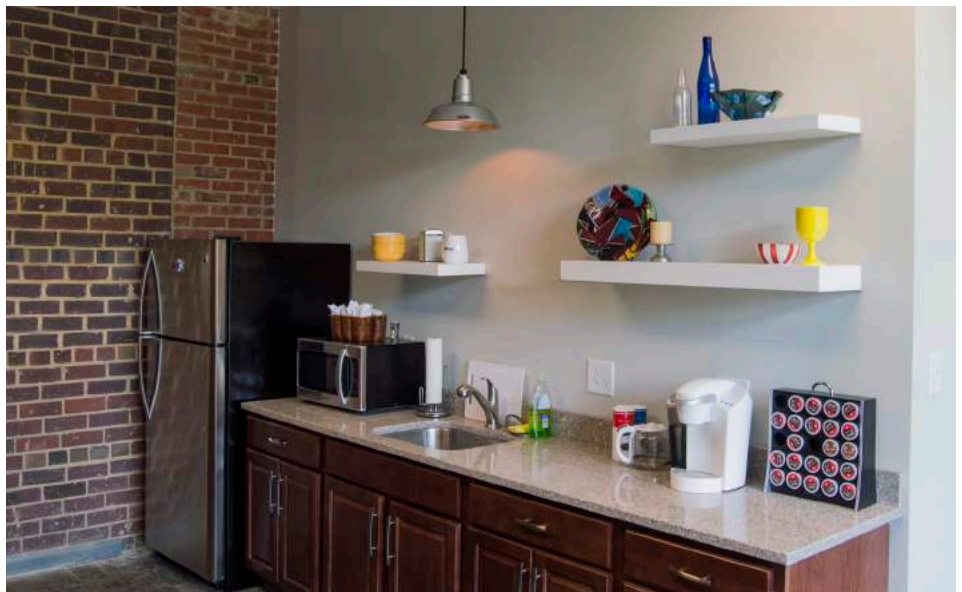
Floating Shelf Support Rods

- Sizes: 6x1.75x1.50 and 10x1.75x1.50
 - Finishes: Black and Raw Steel
 - Carry Capacity: 50 Pounds Each
- Starting at \$38.45



Hidden Shelf Bracket

- Sizes: 8x2x1.65
 - Finishes: Black
 - Carry Capacity: 30 Pounds Each
- Starting at \$22.20



DECORATIVE SHELF SYSTEMS

Universal Shelf System



The Universal Shelf System is designed to create floating shelves in a variety of configurations. Add your own shelving material to create a custom shelf system. Brackets come unfinished, ready for paint to match your decor.



Universal Shelf System

- Sizes: 2x12.50x29
 - Finishes: Raw Steel
 - Carry Capacity: 200 Pounds Each
- Starting at \$109.37

"I am an interior designer and used the brackets from Federal Brace for my bar in my kitchen renovation. These brackets are just as they appear on the website. Very well made and the finish is fantastic. I would highly recommend these brackets."

Victorine L.



Photo: Chins Loves Julia

A photograph showing a white, back-painted glass shelf mounted on a brick wall. The shelf is supported by two silver metal brackets. In front of the shelf, two white bar stools with black trim and silver bases are visible. The background is a brick wall with a power outlet and a light switch.

DECORATIVE SHELF SYSTEMS Back Painted Glass

Federal Brace Back Painted Glass comes in a 36" length and painted on one side to add a pop of color to any room. The glass is 12mm (0.50") thick and available in four different colors. Select a pair of our support brackets to create a floating shelf or table look.

"I've been dealing with you guys for over a year now and have placed several orders - Your service and quality continue to be above and beyond anyone else. Great job guys!"

James B.



Back Painted Glass

- Sizes: 36x12x0.50
- Finishes: Black, Bronze, Tan and White

Starting at \$242.45



WOOD CORBELS



Wood corbels have long been a decorative element of home decor. Federal Brace has designed a method making corbel installation easier, Corbel Mounting System for light duty applications or the Corbel Rib when you need weight bearing capabilities.



Wood Corbel Systems



Wood Corbel Mounting Systems

WOOD CORBELS

Wood Corbel Systems



Corbel Rib Support



Federal Brace has wood corbels available in many designs that are routed and pre-fit with our light duty Corbel Mount System or the weight bearing Corbel Rib, your choice! Make mounting your corbel easier and eliminate the risk of splitting the corbel or matching stain. All fasteners included.



Bar Bracket

- Sizes: 8x3x12
- Finishes: Unfinished Maple - Corbel Mounting System and Corbel Rib
- Carry Capacity: Depends on SKU

Starting at \$82.49



Scalloped Overhang Bracket

- Sizes: 10x3x10
- Finishes: Unfinished Maple - Corbel Mounting System and Corbel Rib
- Carry Capacity: Depends on SKU

Starting at \$70.53



Traditional Bar Bracket

- Sizes: 6.20x3x12
 - Finishes: Unfinished Maple - Corbel Mounting System
 - Carry Capacity: Light Duty
- Starting at \$51.60



Traditional Wood Corbel

- Sizes: 5.60x4.50x9.75
 - Finishes: Unfinished Maple - Corbel Mounting System
 - Carry Capacity: Light Duty
- Starting at \$93.58



Mission Wood Corbel

- Sizes: 6x3x14
 - Finishes: Unfinished Maple - Corbel Mounting System
 - Carry Capacity: Light Duty
- Starting at \$88.74



Scalloped Mission Corbel

- Sizes: 7x5x14
 - Finishes: Unfinished Maple - Corbel Rib
 - Carry Capacity: 375 Pounds Each
- Starting at \$166.88



Lexington Overhang Bracket

- Sizes: 10x3x10
 - Finishes: Unfinished Maple - Corbel Mounting System and Corbel Rib
 - Carry Capacity: Depends on SKU
- Starting at \$62.92



Lexington Bar Bracket

- Sizes: 6.56x.3x12.75
 - Finishes: Unfinished Maple - Corbel Mounting System
 - Carry Capacity: Light Duty
- Starting at \$68.64



Murray

- Sizes: 16x3x18
 - Finishes: Unfinished Maple - Corbel Rib
 - Carry Capacity: 375 Pounds Each
- Starting at \$343.60



Morgan

- Sizes: 16x3x18
 - Finishes: Unfinished Maple - Corbel Rib
 - Carry Capacity: 375 Pounds Each
- Starting at \$327.06



Monique

- Sizes: 16x3x18
 - Finishes: Unfinished Maple - Corbel Rib
 - Carry Capacity: 375 Pounds Each
- Starting at \$327.06

WOOD CORBELS

Wood Corbel Mounting Systems



Federal Brace's Corbel Mounting System is a non-weight bearing system to create an easy mount solution for your wood corbel. Use the Corbel Rib when you need to support a heavy load. Add the Cobel Rib to your corbel for a maximum carrying capacity.

"Great, strong brace that was just what I needed as we moved from a laminate counter top to a much heavier granite one. Very heavy and provides the support needed. Great videos available to provide that extra view of the finished product."

James B.

Corbel Mount System



- Sizes: 4x1x2.50
 - Finishes: Galvanized
 - Carry Capacity: Light Duty
- Starting at \$19.95



Corbel Rib Support

- Sizes: 6x2x6, 8x2x8, 10x2x10, 12x2x12 and 14x2x14
 - Finishes: Black
 - Carry Capacity: 375 Pounds Each
- Starting at \$48.25



USE YOUR OWN
CORBELS

HANDLES AND PULLS



Barn door handles, slides, or pulls, no matter what they are called, will open doors and drawers. Perfect for the DIY-er creating a new door or the designer adding a special hardware touch. Available in powder coat black or stainless steel, these finishes make Federal Brace Barn Door Handles and Pulls perfect for indoor or outdoor use.

"Great company with great products!"

Survey Response



Barn Door Handles

- Sizes: 10.25x2x2
- Finishes: Flat Black, Stainless
- Screws: Included

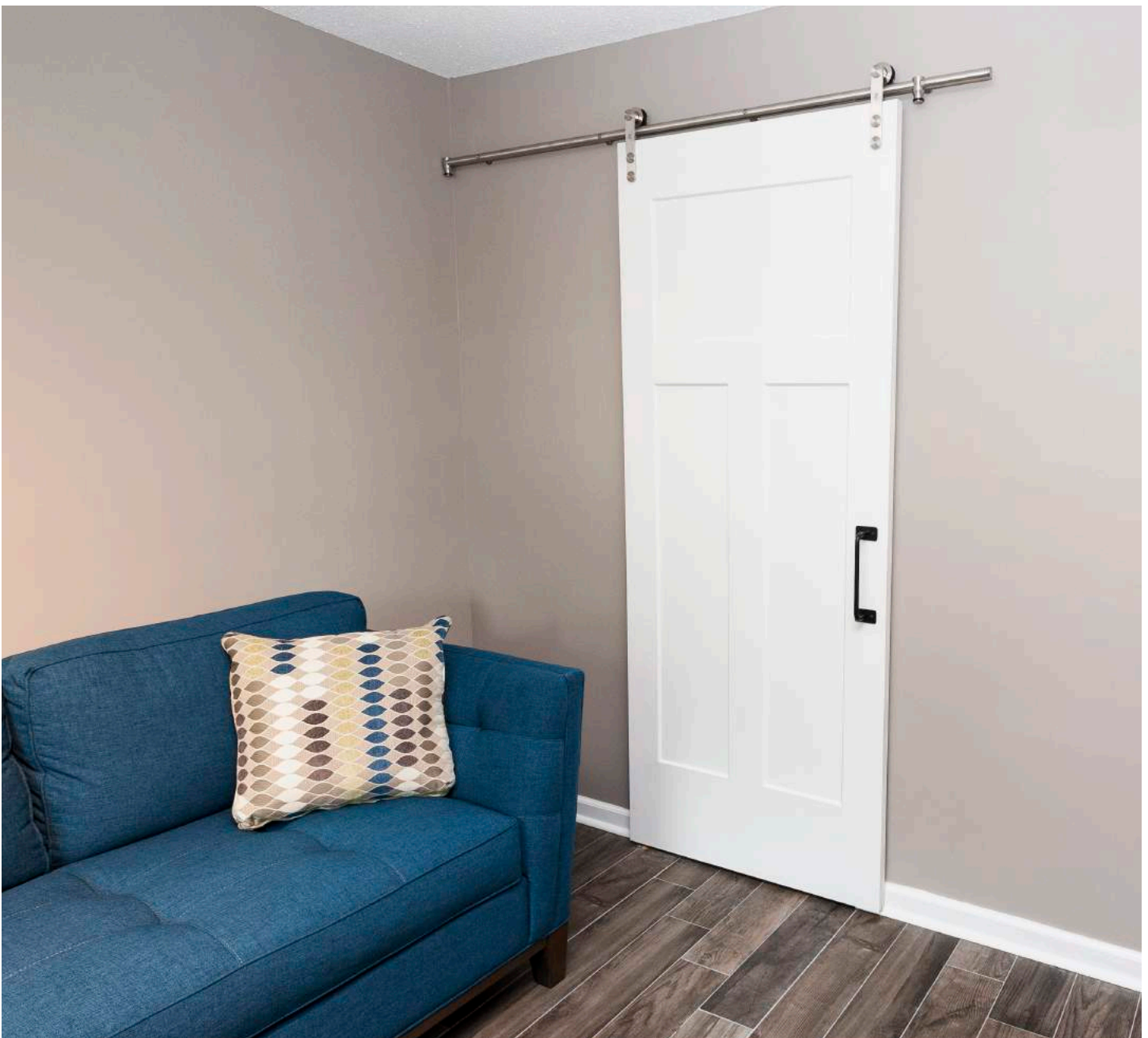
Starting at \$39.45



Bar Pulls

- Sizes: 10.25x2.50x2.50
- Finishes: Flat Black
- Screws: Included

Starting at \$63.52



CLOSET BRACKETS



Closet and garage brackets are heavy duty and boast a weight carry capacity of 500 pounds with a shelf attachment at the ready. Add the rod for hanging additional items or just use hooks. Available in two finishes.



Accessory Closet Bracket

- Sizes: 16x2x8
 - Finishes: Black and Flat White
 - Carry Capacity: 500 Pounds Each
- Starting at \$107.38



Utility Closet Bracket

- Sizes: 16x1.50x7.25
 - Finishes: Black and Flat White
 - Carry Capacity: 500 Pounds Each
- Starting at \$86.50

MANTEL BRACKETS



Our mantel brackets are the perfect solution for supporting a heavy beam mantel over your outdoor or indoor fireplace. Federal Brace mantel support brackets easily tie into your stonework or stud walls for a decorative look or a minimal design. Finished in a matte black powder coat for ultimate protection from the elements of smoke.



Cascade

- Sizes: 6x5.5x10
 - Finishes: Flat Black
 - Carry Capacity: 500 Pounds Each
- Starting at \$128.90



Appalachian

- Sizes: 6x6 and 8x8
 - Finishes: Flat Black
 - Carry Capacity: 375 Pounds Each
- Starting at \$68.17



Biltmore

- Sizes: 6x6 and 8x8
 - Finishes: Flat Black
 - Carry Capacity: 375 Pounds Each
- Starting at \$68.25



Nevada

- Sizes: 6x6 and 8x8
 - Finishes: Flat Black
 - Carry Capacity: 375 Pounds Each
- Starting at \$67.25



Breckenridge

- Sizes: 6x6 and 8x8
 - Finishes: Flat Black
 - Carry Capacity: 375 Pounds Each
- Starting at \$68.25

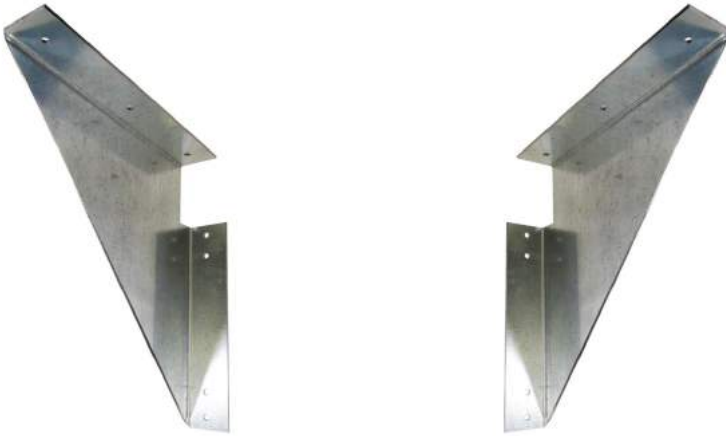


The warmth, beauty and strength of the outdoors inside.

CABINET SUPPORTS



The Jefferson Cabinet Support Bracket provides full support and makes it easy to hang upper cabinets or to float a base cabinet. Two sizes accommodate upper and lower cabinets. Right and left side mounting brackets are available in galvanized metal with a top and side flange for mounting.



Jefferson

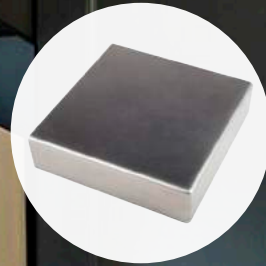
- Sizes: 10x10 and 12x12
 - Finishes: Galvanized
 - Carry Capacity: 500 Pounds Each
- Starting at \$38.75



STAINLESS STEEL SURFACES



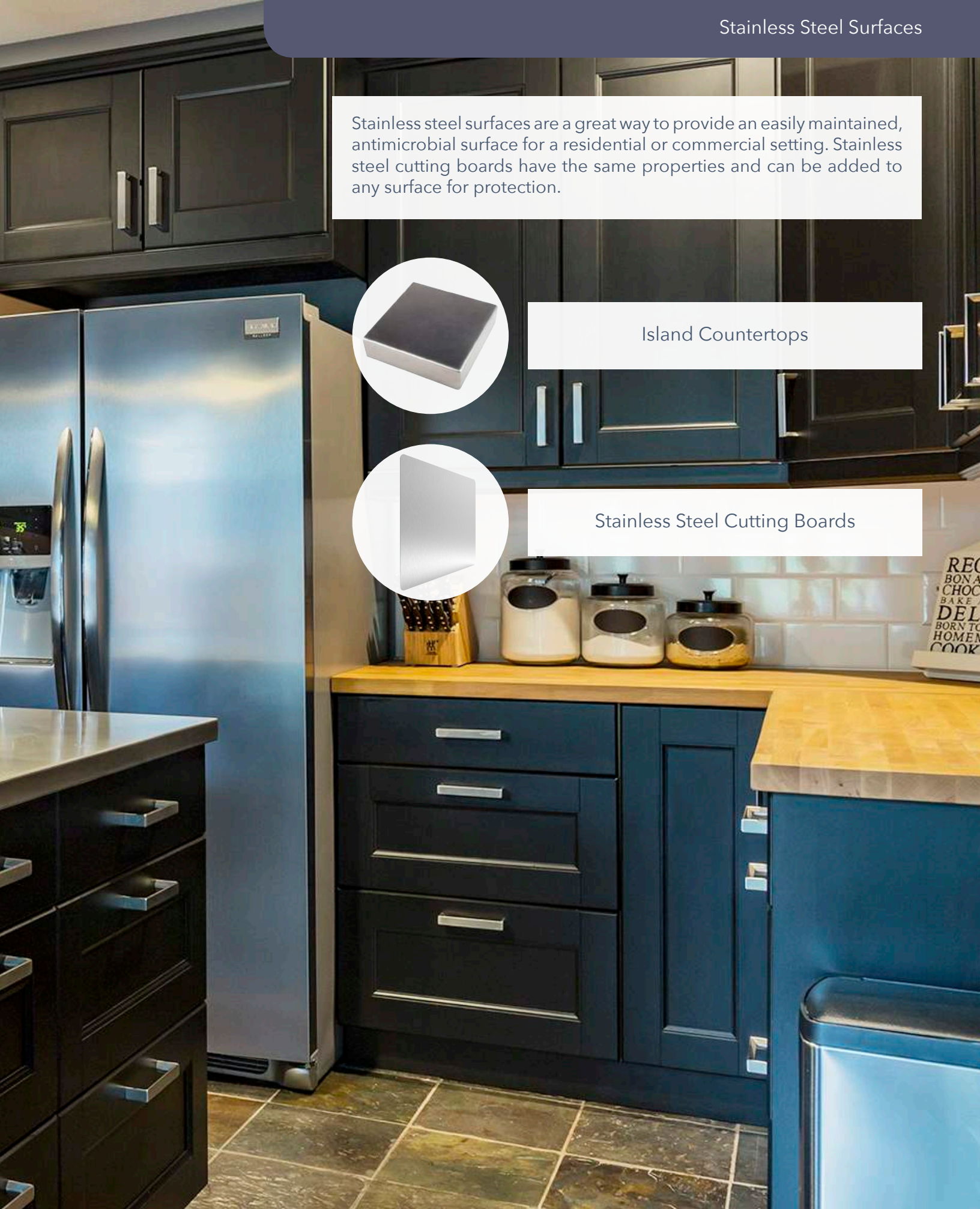
Stainless steel surfaces are a great way to provide an easily maintained, antimicrobial surface for a residential or commercial setting. Stainless steel cutting boards have the same properties and can be added to any surface for protection.



Island Countertops



Stainless Steel Cutting Boards





STAINLESS STEEL SURFACES

Stainless Steel Island Countertops

Stainless Steel Island Countertops are the perfect solution for island prep surfaces or sterile work centers. Each stainless island countertop is 1-1/2" thick with finished square edges. Cabinet grade plywood substrate is included for installing your countertop. Whether commercial or residential, a stainless steel countertop is a perfect solution for an anti-microbial, stain free counter and is very easy to clean.

"The product was exactly what I was looking for. I will order again when needed. Thank you. My shipment came much early that was estimated which was great. Thanks again."

Kennedy



Island Countertops

- Sizes: 50x26x1.50
- Finishes: Stainless Steel
- Custom sizing is available starting at \$99.00 per square foot - no cutouts
- Additional Crate Fee - \$125

Starting at \$872.00



STAINLESS STEEL SURFACES

Stainless Steel Cutting Boards



Stainless Steel Cutting Boards are durable, long lasting and unique in that they provide the most anti-bacterial surface for food prep. Stainless steel will also match your other kitchen appliances while on the counter not in use.

"Federal Brace products are top quality and add value to the projects we sell. The installers in the field say they install with ease and it does not waste their time. The website is fast, efficient and convenient."

Survey Response



SS Cutting Board - Flat

- Sizes: 15x12x0.10
- Finishes: Stainless Steel
- Material Thickness: 20 Gauge

Starting at \$28.78

*SS = Stainless Steel



SS Cutting Board - Counter Lip

- Sizes: 18x16x0.10
- Finishes: Stainless Steel
- Material Thickness: 20 Gauge

Starting at \$37.38

*SS = Stainless Steel



COUNTER MOUNT CELL PHONE CHARGER



The smart kitchen now includes wireless charging for all your Qi enabled devices! The Counter Mount Cell Phone Charger is designed as an accessory for Federal Brace's Foremont Counter Mounted Support, but can also be mounted anywhere. The cell phone charger is available with or without the housing ring, so you can mount to your countertop, desk, nightstand or end tables.



Counter Mount Cell Phone Charger

- Sizes: 5.25x3.25x0.50
- Finishes: Stainless Steel
- Wireless Standard: Qi

Starting at \$74.99



Cell Phone Charger

- Sizes: 3x3x0.50
- Finishes: Gloss White
- Wireless Standard: Qi

Starting at \$32.99





Federal Brace
BEAUTIFULLY CRAFTED CONFIDENT SUPPORT

Do you want Special Offers and the latest News? Join the Federal Brace Newsletter!

To get the latest news about all of our new products, special offers, and events in the Federal Brace world, go to www.federalbrace.com and enter your email at the bottom of the page to sign up.

100% Made In America

All Federal Brace countertop brackets are designed and produced in the United States of America. We manufacture the best supports on the market and are honored to service your countertop requirement. When you order from Federal Brace you can know that your corbels will be produced with quality in mind and your satisfaction as the highest priority.



Join Federal Brace Online:



710 E Catawba Street Suite A
Belmont, NC 28012
www.federalbrace.com
(877) 353-8899

